



# NOTTINGHAMSHIRE BUILDING PRESERVATION TRUST BULLETIN

## BUILDINGS AT RISK REGISTER

### REPORT ON POSITION OF A NEW REGISTER AS AT 17TH JANUARY 1990

#### The First Edition

Members will recall that a first edition of a Buildings at Risk Register was published by the County Council in October 1987.

That edition was assembled from information given by a variety of sources, i.e.

from members of the Building Trust

from information given by some of the District Councils

buildings noticed by members of the Conservation Team of the County Council (note: now renamed The Heritage Team)

from occasional notes issued by the Royal Commission on Historical Monuments

As a first effort it was quite good and has proved useful. However, it is inaccurate in parts simply because it was not all checked out before publication, the reasons being lack of time available to allocate to the work and related shortage of staff or persons to do more.

At the time of issue, a copy was sent to English Heritage, since it was known that that body was interested in developing a National Register. Prior to the publication of the Nottinghamshire list, only a few counties had produced lists.

#### The New Edition

Work on this started later in 1988 but, in early 1989, it came to our notice that English Heritage had been developing a system for recording buildings at risk, both on a manual system and on a computerised method on which they were still working. This was being developed out of a pilot study carried out in association with Kirklees Metropolitan District Council. We made contact with Vanessa Brand, English Heritage's Conservation Officer for Buildings at Risk, early in 1989, discussed the matter and decided to join in on their national scheme and adopt their draft record form for use on each building from that date.

We have therefore been assembling the list in this form. However, it has still been the intention to extract the information and publish a new edition of the Nottinghamshire Buildings at Risk list, in the format as before, for easy general reference.

Work has continued on the new list. We have had input from the Conservation Officers at Rushcliffe and Newark & Sherwood District Councils to date. Of course, several of the District Councils do not have Conservation Officers on their staff, which presumably limits their ability to help.

English Heritage wrote to all Chief Planning Officers of District and County Councils in England on 1st November 1989, giving details of their system and inviting participation in both their manual record and computerised record systems. Further, they offered their computer programme free to all Councils carrying out a buildings at risk survey. In response, we confirmed that we were putting Nottinghamshire on to their 'Kirklees' model. We also requested that they supply us with the computer programme; this was received a short time ago.

In making the new Register, we have been much more objective, by covering on the ground, by car or on foot, each town, village, hamlet and, where possible, isolated buildings. This, of course, is the only way to be definite. Unfortunately, it is time consuming and has to be pulled in with other work - there have only been two of us to do it. Concurrently, we have been taking a photograph of each building at risk for visual reference.

The English Heritage record is primarily concerned with Listed Buildings at Risk or non-listed ones in Conservation Areas. We have additionally been recording any other buildings which we think have significance. There are, for instance, large numbers of Victorian buildings which are neither listed nor in Conservation Areas and which need looking at to see if they are at risk, if of merit.

#### POSITION AT THIS MOMENT

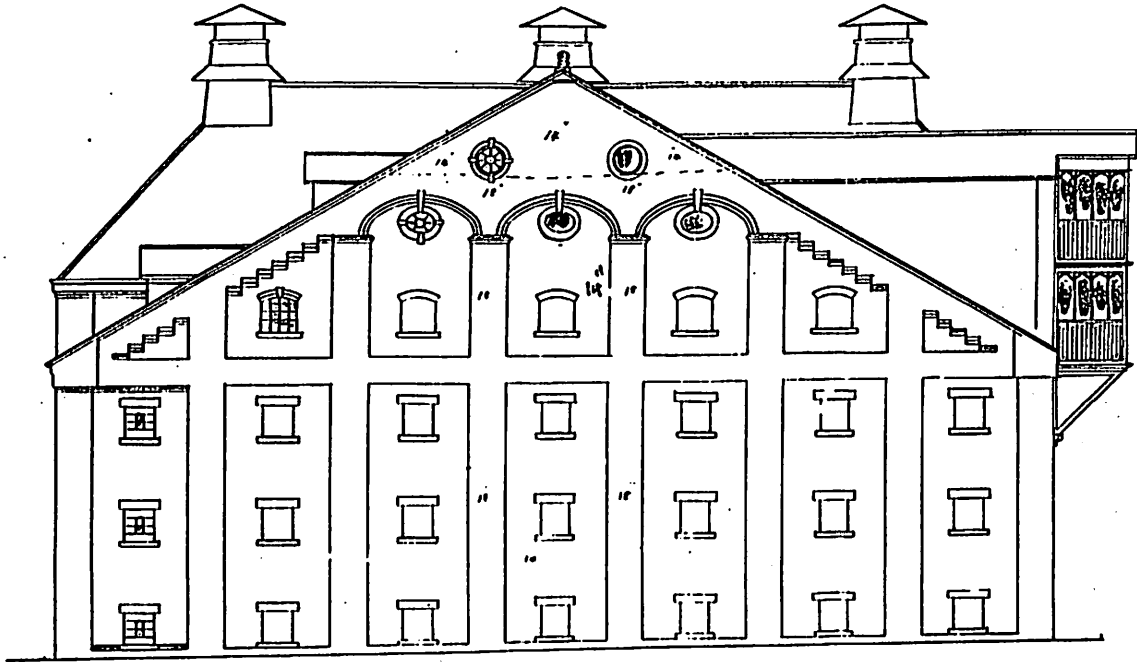
##### Manual Record

- |                             |                                                                   |
|-----------------------------|-------------------------------------------------------------------|
| Rushcliffe B.C. Area        | - now complete on manual record                                   |
| Newark & Sherwood D.C. Area | - the district has had about 85% of its area covered and recorded |
| Bassetlaw D.C. Area         | - again, about 85-90% of the area covered and recorded            |
| Broxtowe B.C. Area          | - now complete on manual record                                   |
| Nottingham City Area        | - started - some recorded                                         |
| Ashfield D.C. Area          | - started - some recorded                                         |
| Mansfield D.C. Area         | - started - some recorded                                         |
| Gedling B.C. Area           | - started - some recorded                                         |

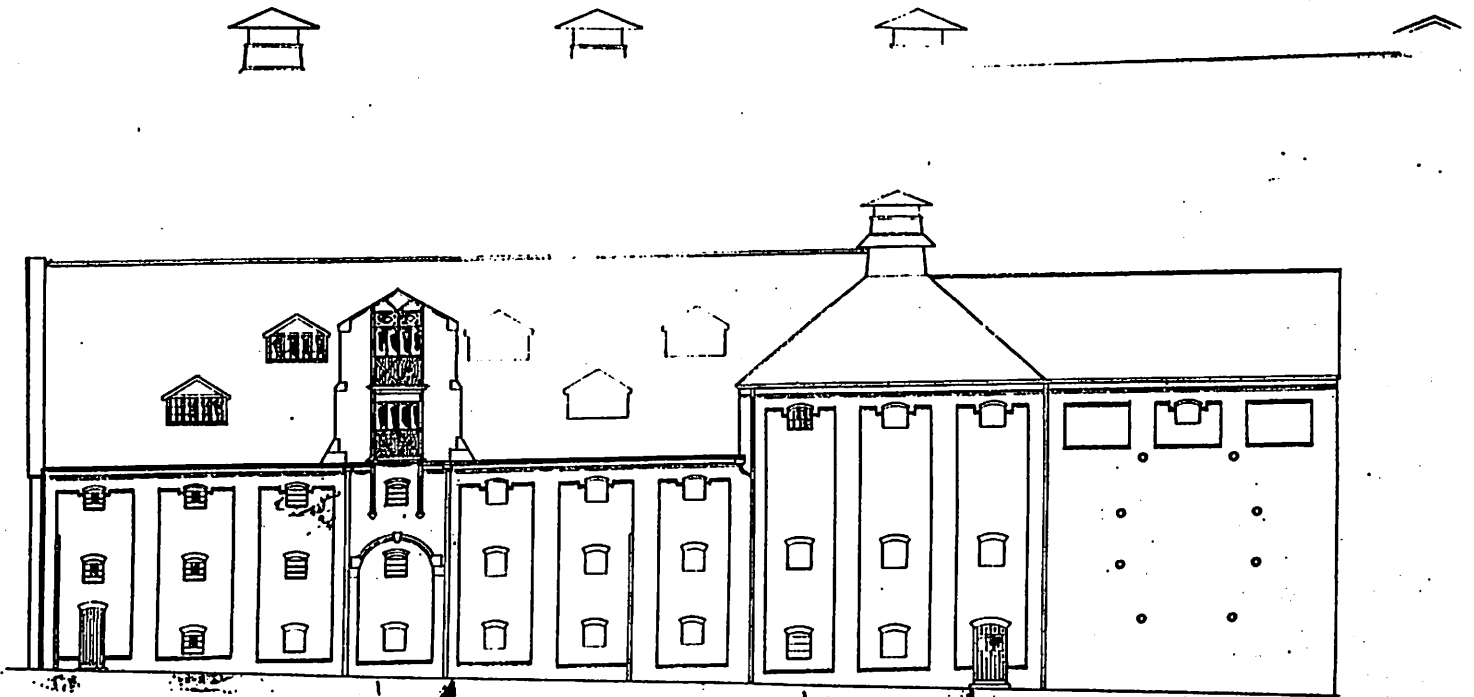
Thus, in physical area, the greater part of the County has now been covered and the greater part of the disposition of the Listed Buildings in the County has been covered.

BASFORD MALTINGS, ALPINE STREET, BASFORD

Elevation to Road



Side Elevation



### Computer Record

This has not yet been started, as the programme has only just been received.

### Completed Lists

As soon as the list is completed for each District Council area, a copy of the individual record sheets will be sent to that Council. A separate set will also be given to the N.B.P.T. The Rushcliffe lists were passed to the Trust at the 17th January meeting; the completed Broxtowe list will follow. Copies will also be supplied, in due course, to English Heritage.

### Further Progress

Present momentum will be maintained. We will be very interested to receive names of any buildings that concern members, so that these can also be considered for incorporation.

The problem with a list is that it virtually changes daily. A building at risk today can easily cease to be so tomorrow; tomorrow can bring new ones at risk. Ongoing monitoring is essential. Any contributory help towards this is most welcome.